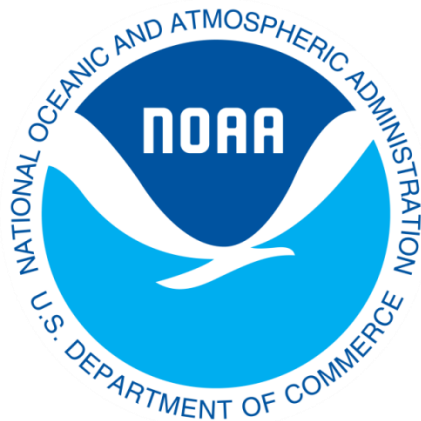


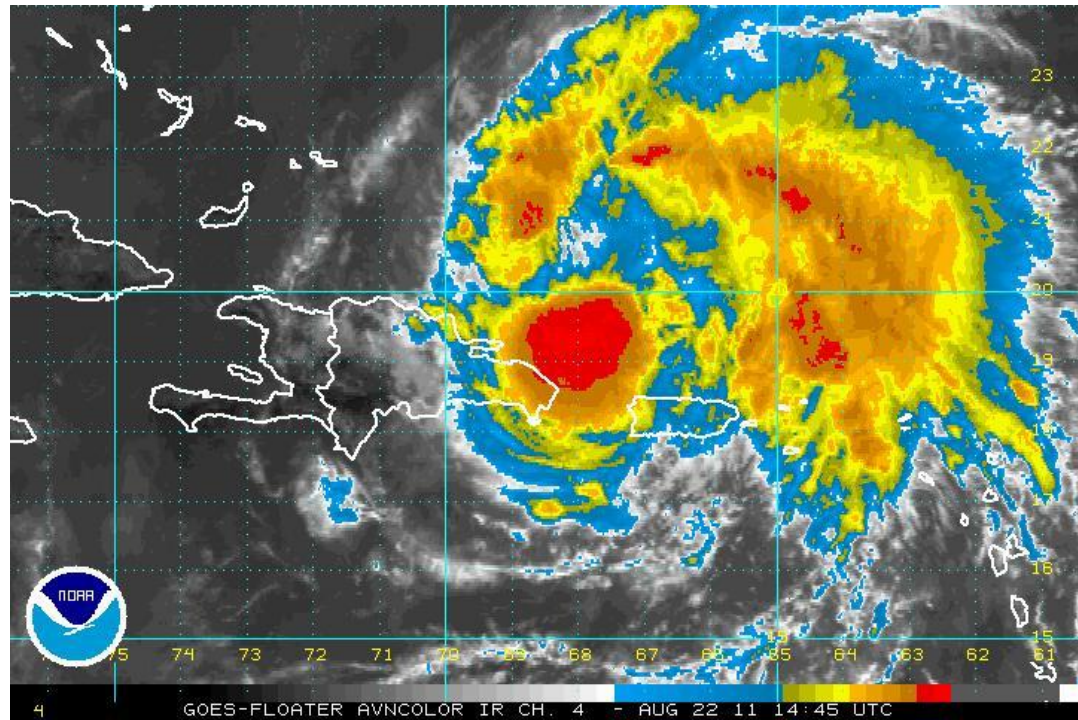
Hurricane Irene

Prepared at: 200 PM Monday, August 22, 2011

Irene at Category 1 Hurricane with 80 MPH located Northwest of Puerto Rico as of 11 AM EDT

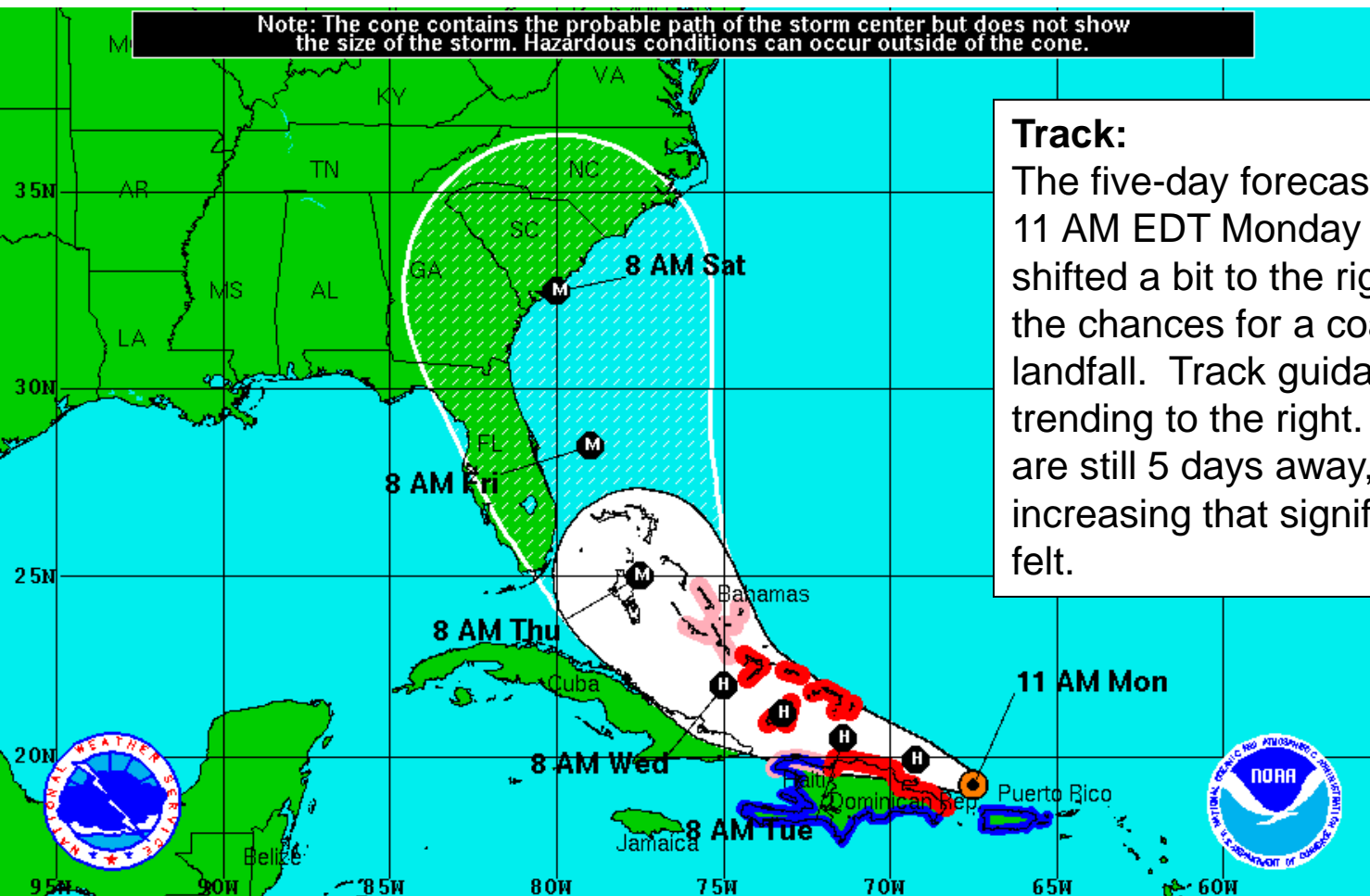


NWS Raleigh, NC



Monday Irene Information

Note: The cone contains the probable path of the storm center but does not show the size of the storm. Hazardous conditions can occur outside of the cone.



Track:
 The five-day forecast track, updated at 11 AM EDT Monday morning, has been shifted a bit to the right. This increases the chances for a coastal Carolina landfall. Track guidance has been trending to the right. The impacts for NC are still 5 days away, but confidence is increasing that significant impacts will be felt.

<p>Hurricane Irene Monday August 22, 2011 11 AM EDT Advisory 8 NWS National Hurricane Center</p>	<p>Current Information: ● Center Location 19.2 N 67.5 W Max Sustained Wind 80 mph Movement WNW at 13 mph</p>	<p>Forecast Positions: ● Tropical Cyclone ○ Post-Tropical Sustained Winds: D < 39 mph S 39-73 mph H 74-110 mph M > 110mph</p>
<p>Potential Track Area: ▽ Day 1-3 ▽ Day 4-5</p>	<p>Watches: ■ Hurricane ■ Trop.Storm</p>	<p>Warnings: ■ Hurricane ■ Trop.Storm</p>

Monday Irene Information



Intensity (Maximum Wind Speed) Probability Table
 Hurricane Irene Advisory Number 8
 11:00 AM AST Aug 22 2011



Wind Range (mph)	Forecast Time						
	12 hour for 8 PM Mon	24 hour for 8 AM Tue	36 hour for 8 PM Tue	48 hour for 8 AM Wed	72 hour for 8 AM Thu	96 hour for 8 AM Fri	120 hour for 8 AM Sat
Dissipated	<1%	<1%	1%	1%	2%	5%	24%
Tropical Depression (<39)	<1%	3%	1%	2%	1%	7%	16%
Tropical Storm (39-73)	13%	20%	16%	19%	16%	21%	23%
Hurricane (all categories)	87%	77%	82%	78%	81%	67%	37%
-- Category 1 (74-95)	76%	55%	48%	41%	35%	31%	21%
-- Category 2 (96-110)	9%	17%	24%	22%	25%	20%	9%
-- Category 3 (111-130)	2%	5%	9%	13%	17%	13%	6%
-- Category 4 (131-155)	<1%	1%	2%	3%	4%	3%	1%
-- Category 5 (>155)	<1%	<1%	<1%	<1%	<1%	<1%	<1%
Forecast Maximum Wind	85 mph	90 mph	100 mph	105 mph	115 mph	115 mph	115 mph

Overall Wind Probabilities:
 Chances are good for Irene to contain hurricane force winds near the time of landfall.

Monday Irene Information

Possible NC impacts starting late Friday and lasting through early Sunday:	<ul style="list-style-type: none">• Dangerous rip currents along the beaches• Heavy rain (multiple inches, especially along and east of I-95) and localized poor drainage flooding• Tropical and hurricane force winds mainly near the coast• Coastal storm surge possible• Brief tornadoes...mainly to the north and east of the track
Confidence Factor:	<ul style="list-style-type: none">• Confidence is increasing that this system will impact the NC eastern piedmont and coastal plain.• The track has been shifting to the right...so particularly the eastern half of the state should be on high alert.
Other thoughts and concerns:	<ul style="list-style-type: none">• This storm is still 5 days away and tweaks to the forecast track are still expected.• If track doesn't change much, the first of the impacts may be felt by late Friday.• Those planning to travel to the coast this weekend should pay close attention. Greatest impacts expected along the coast.• 90-day rainfall across the SE part of the state is about 6-12 inches below normal, so rainfall with this system is much needed and would help alleviate drought conditions.

References

National Weather Service Raleigh, NC
Nick Petro
Warning Coordination Meteorologist
Nicholas.Petro@noaa.gov
(919) 515-8210 ext. 223

For the latest information please see the following websites:

National Hurricane Center: <http://www.nhc.noaa.gov/>

NWS Webpages:

NWS Raleigh: <http://www.erh.noaa.gov/rah/>

NWS Wakefield: <http://www.erh.noaa.gov/akq/>

NWS Morehead City: <http://www.erh.noaa.gov/mhx/>

NWS Wilmington: <http://www.erh.noaa.gov/ilm/>

This briefing will be updated Tuesday morning. In the meantime, reference the links above.