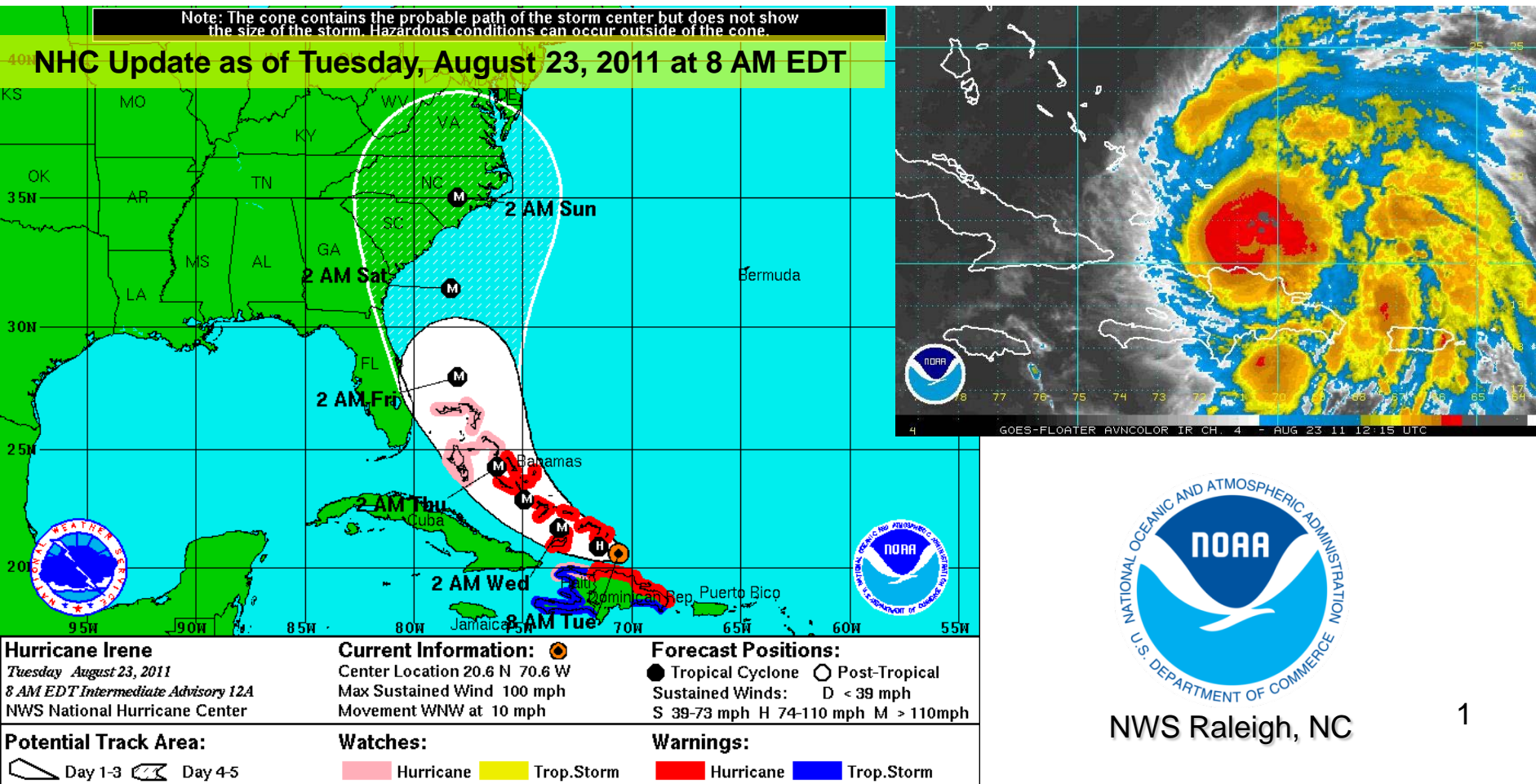


# Hurricane Irene Briefing

Prepared 9 AM, Tuesday August 23, 2011

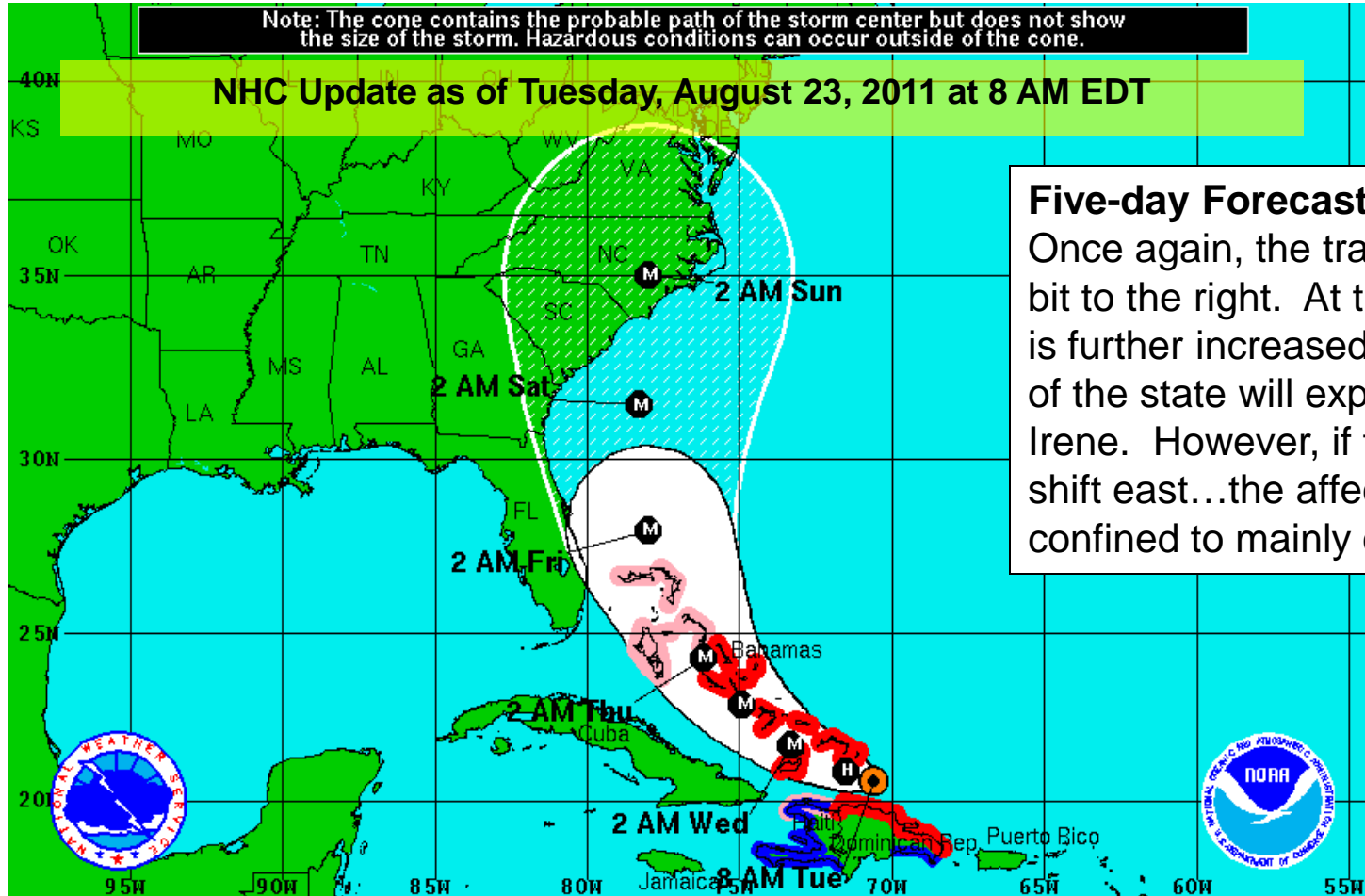
## Hurricane Irene now a Category 2 Hurricane headed toward the SE US coast



# Tuesday Irene Information

Note: The cone contains the probable path of the storm center but does not show the size of the storm. Hazardous conditions can occur outside of the cone.

NHC Update as of Tuesday, August 23, 2011 at 8 AM EDT



**Five-day Forecast Track:**  
 Once again, the track has been shifted a bit to the right. At this point, confidence is further increased that at least portions of the state will experience impacts from Irene. However, if the track continues to shift east...the affected portion may be confined to mainly coastal areas.

**Hurricane Irene**  
 Tuesday August 23, 2011  
 8 AM EDT Intermediate Advisory 12A  
 NWS National Hurricane Center

**Current Information:** ●  
 Center Location 20.6 N 70.6 W  
 Max Sustained Wind 100 mph  
 Movement WNW at 10 mph

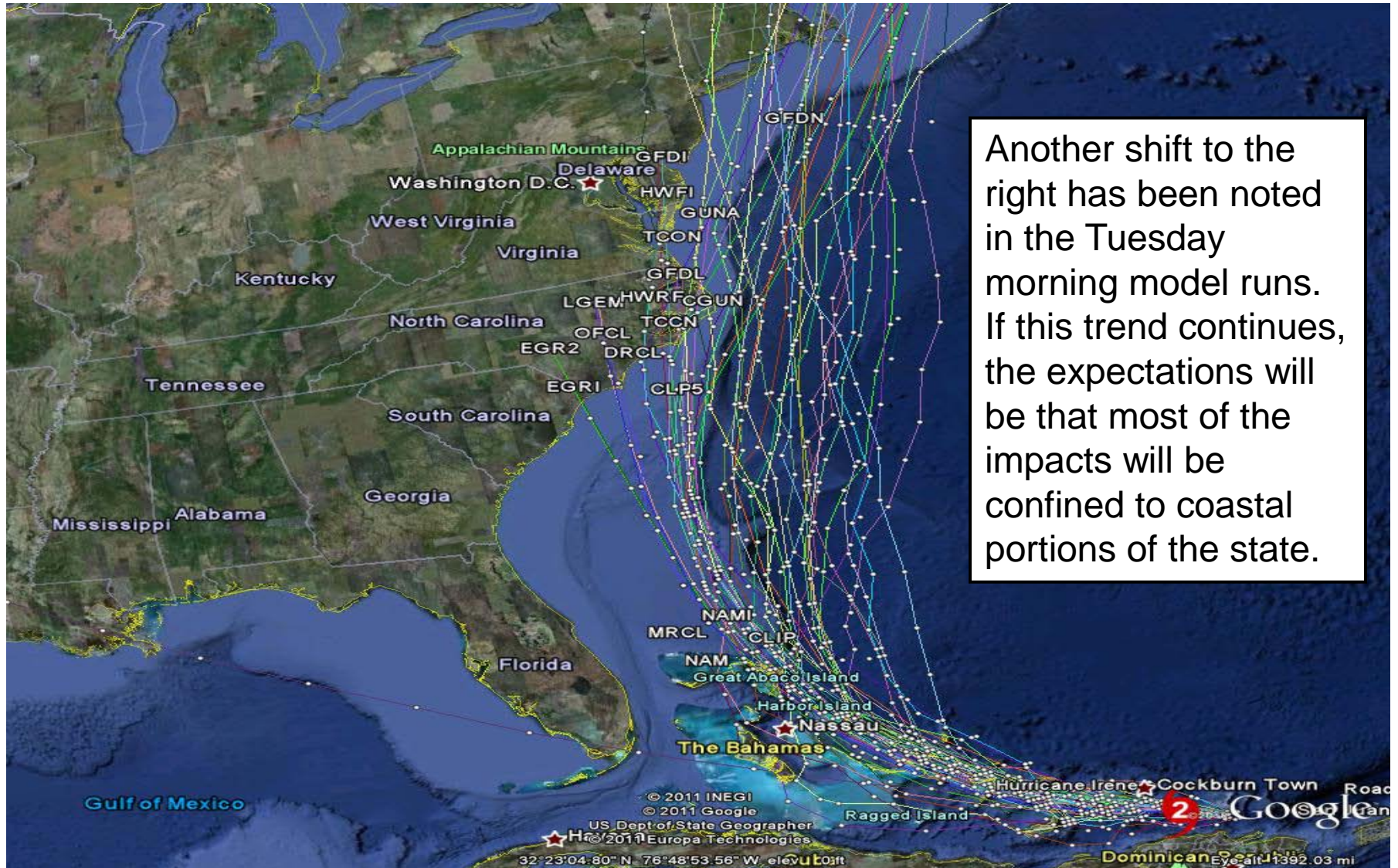
**Forecast Positions:**  
 ● Tropical Cyclone ○ Post-Tropical  
 Sustained Winds: D < 39 mph  
 S 39-73 mph H 74-110 mph M > 110mph

**Potential Track Area:**  
 ▭ Day 1-3 ▭ Day 4-5

**Watches:**  
 ▭ Hurricane ▭ Trop.Storm

**Warnings:**  
 ▭ Hurricane ▭ Trop.Storm

# Hurricane Irene Model Tracks



Another shift to the right has been noted in the Tuesday morning model runs. If this trend continues, the expectations will be that most of the impacts will be confined to coastal portions of the state.

# Tuesday Irene Information

---

<b>Possible NC impacts starting late Friday and lasting through Sunday:</b>	<ul style="list-style-type: none"><li>• Dangerous rip currents along the beaches</li><li>• Heavy rain near the coast...lighter amounts west of I-95. Localized poor drainage flooding expected.</li><li>• Tropical and hurricane force winds mainly near the coast</li><li>• Coastal storm surge possible</li><li>• Brief tornadoes...mainly to the north and east of the track</li></ul>
<b>Confidence Factor:</b>	<ul style="list-style-type: none"><li>• Once again, the track has been shifted to the right. If this trend continues...primary impacts will be confined to the coastal areas.</li><li>• Confidence is high regarding coastal impacts, but decreasing confidence that central portions of the state will be impacted.</li></ul>
<b>Other thoughts and concerns:</b>	<ul style="list-style-type: none"><li>• This storm is still 4 days away and tweaks to the forecast track are still expected.</li><li>• If track doesn't change much, the first of the impacts may be felt by late Friday or early Saturday</li><li>• Those planning to travel to the coast this weekend should pay close attention since the greatest impacts are expected along the coast, and particularly the Outer Banks.</li><li>• 90-day rainfall across the SE part of the state is about 6-12 inches below normal, so rainfall with this system is much needed and would help alleviate drought conditions. However, if the track continues to shift east, drought relief may be limited.</li></ul>

# References

**National Weather Service Raleigh, NC**  
**Nick Petro**  
**Warning Coordination Meteorologist**  
**Nicholas.Petro@noaa.gov**  
**(919) 515-8210 ext. 223**

For the latest information please see the following websites:

National Hurricane Center: <http://www.nhc.noaa.gov/>

NWS Webpages:

NWS Raleigh: <http://www.erh.noaa.gov/rah/>

NWS Wakefield: <http://www.erh.noaa.gov/akq/>

NWS Morehead City: <http://www.erh.noaa.gov/mhx/>

NWS Wilmington: <http://www.erh.noaa.gov/ilm/>

This briefing will be updated Tuesday afternoon. In the meantime, reference the links above.