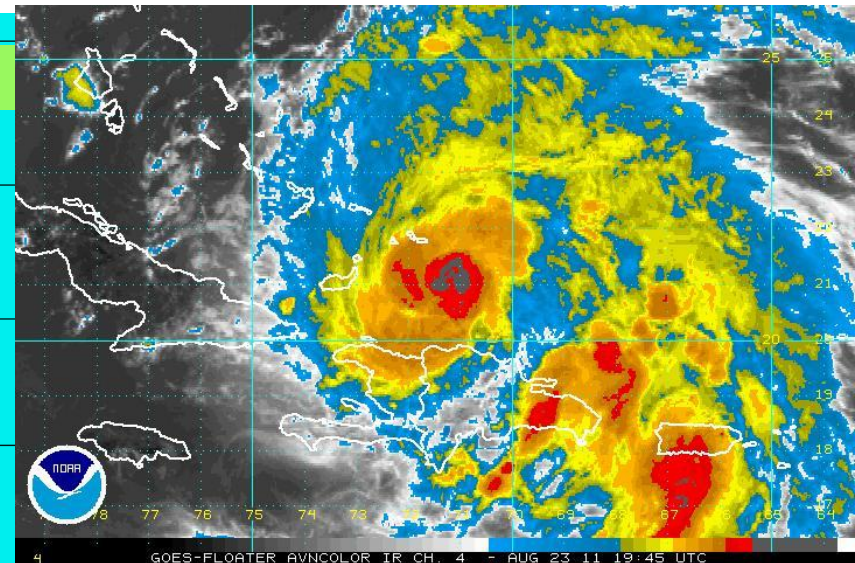
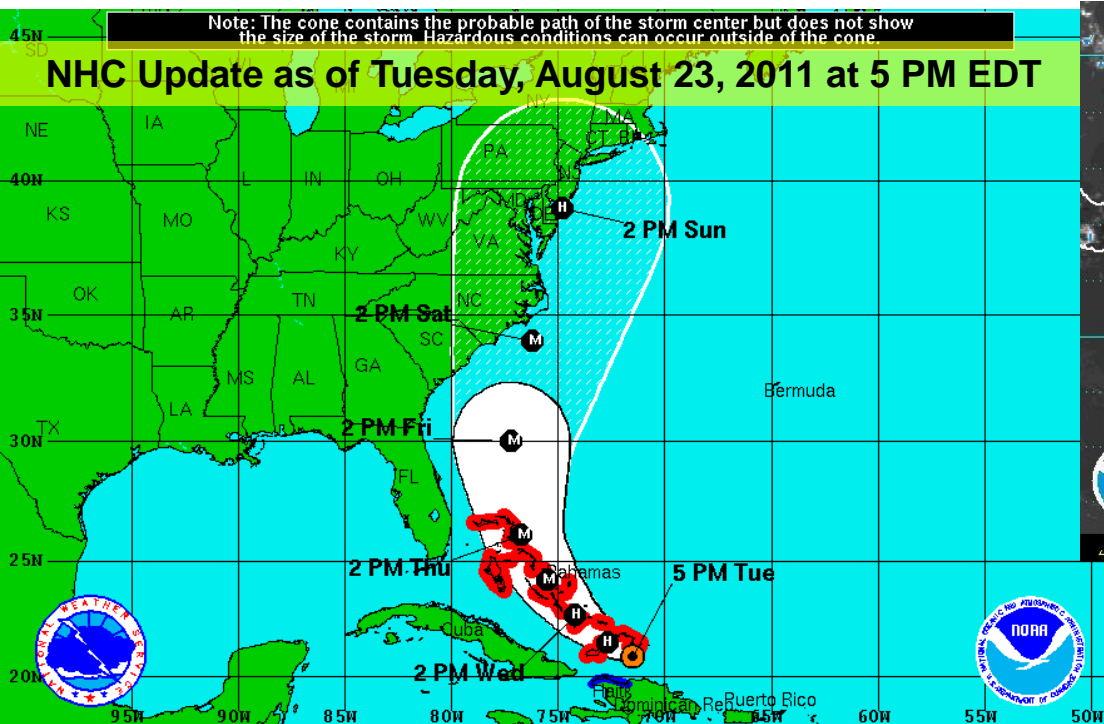


Hurricane Irene Briefing

Prepared 5 PM, Tuesday August 23, 2011

Hurricane Irene still a category 2 hurricane
headed toward the SE US coast



Hurricane Irene Tuesday August 23, 2011 5 PM EDT Advisory 14 NWS National Hurricane Center	Current Information: Center Location 20.9 N 71.5 W Max Sustained Wind 90 mph Movement WNW at 9 mph	Forecast Positions: ● Tropical Cyclone ○ Post-Tropical Sustained Winds: D < 39 mph S 39-73 mph H 74-110 mph M > 110mph
Potential Track Area: Day 1-3 Day 4-5	Watches: Hurricane Trop. Storm	Warnings: Hurricane Trop. Storm



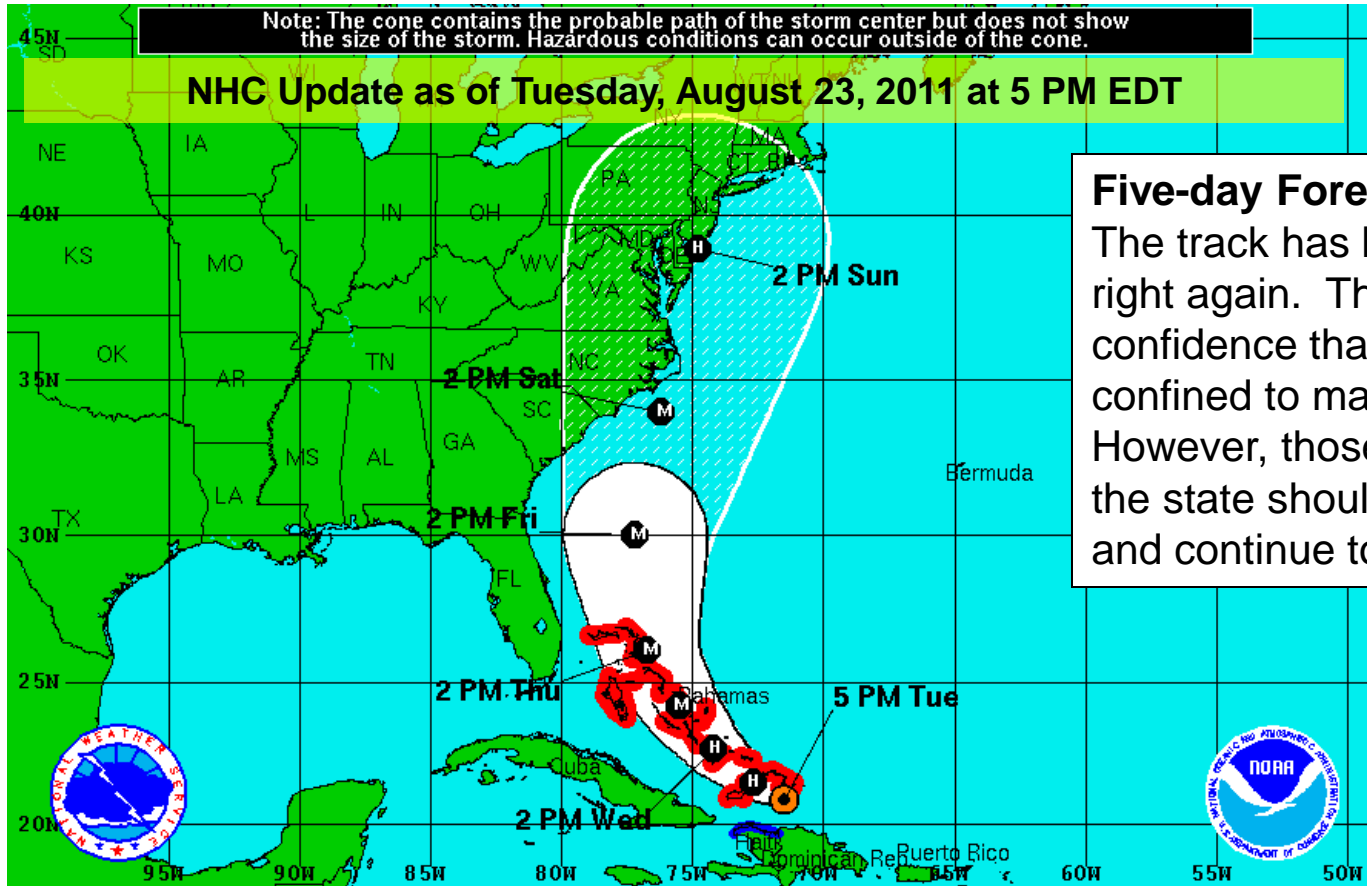
Tuesday Irene Information




Note: The cone contains the probable path of the storm center but does not show the size of the storm. Hazardous conditions can occur outside of the cone.

NHC Update as of Tuesday, August 23, 2011 at 5 PM EDT

Five-day Forecast Track:

The track has been slightly shifted to the right again. This increases our confidence that the worst impacts will be confined to mainly coastal areas. However, those in the central portion of the state should not let their guard down and continue to closely monitor.



Hurricane Irene Tuesday August 23, 2011 5 PM EDT Advisory 14 NWS National Hurricane Center	Current Information: 	Forecast Positions:
	Center Location 20.9 N 71.5 W Max Sustained Wind 90 mph Movement WNW at 9 mph	 Tropical Cyclone  Post-Tropical Sustained Winds: D < 39 mph S 39-73 mph H 74-110 mph M > 110mph

Potential Track Area:  Day 1-3  Day 4-5	Watches:  Hurricane  Trop.Storm	Warnings:  Hurricane  Trop.Storm
---	---	--

Tuesday Irene Information – Afternoon Update

Possible NC impacts starting late Friday and lasting through Sunday:

- Dangerous rip currents along the beaches
- Heavy rain near the coast...lighter amounts west of I-95. Localized poor drainage flooding expected with any heavy rain.
- Tropical and hurricane force winds mainly near the coast
- Coastal storm surge possible
- Brief tornadoes...mainly to the north and east of the track

Confidence Factor:

- Once again, the track has been shifted to the right. Confidence is increasing that that primary impacts will be confined to the coastal areas...and particularly the Outer Banks.
- Those in the central portion of the state should not let their guard down as things can still change, and some impacts are still expected...particularly with respect to heavy rain chances.

Other thoughts and concerns:

- This storm is still 4 days away and tweaks to the forecast track are still expected.
- If track doesn't change much, the first of the impacts may be felt by late Friday or early Saturday
- Those planning to travel to the coast this weekend should pay close attention since the greatest impacts are expected along the coast, and particularly the Outer Banks.
- 90-day rainfall across the SE part of the state is about 6-12 inches below normal, so rainfall with this system is much needed and would help alleviate drought conditions. However, if the track continues to shift east, drought relief may be limited.

References

National Weather Service Raleigh, NC
Nick Petro
Warning Coordination Meteorologist
Nicholas.Petro@noaa.gov
(919) 515-8210 ext. 223

For the latest information please see the following websites:

National Hurricane Center: <http://www.nhc.noaa.gov/>

NWS Webpages:

NWS Raleigh: <http://www.erh.noaa.gov/rah/>

NWS Wakefield: <http://www.erh.noaa.gov/akq/>

NWS Morehead City: <http://www.erh.noaa.gov/mhx/>

NWS Wilmington: <http://www.erh.noaa.gov/ilm/>

This briefing will be updated Wednesday morning. In the meantime, reference the links above.