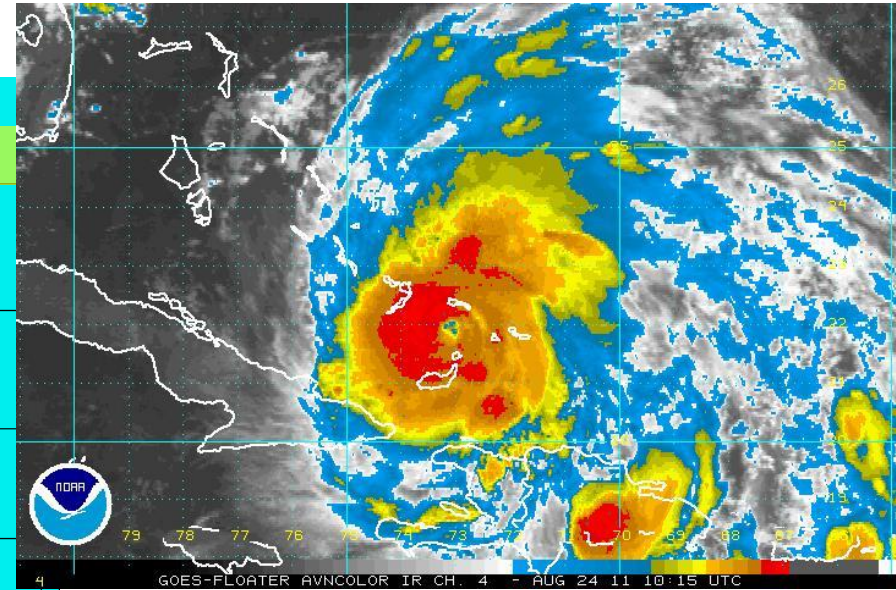
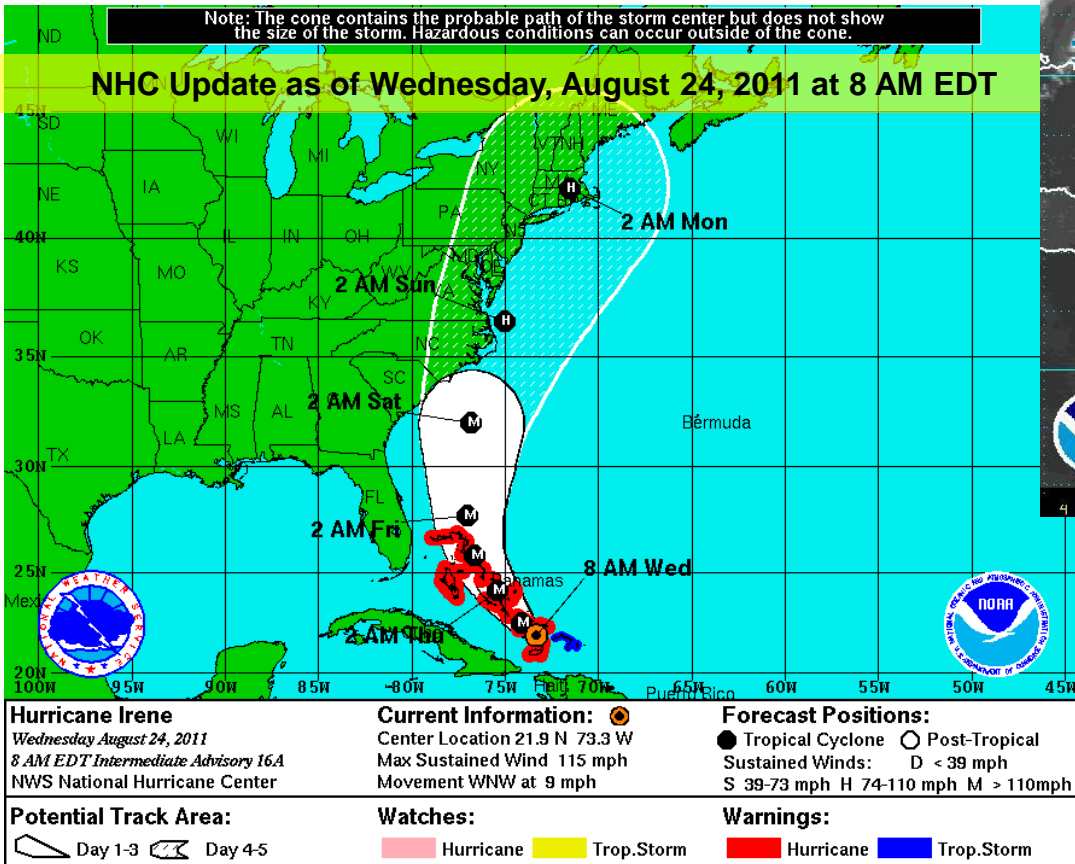


Hurricane Irene Briefing

Prepared 8 AM, Wednesday August 24, 2011

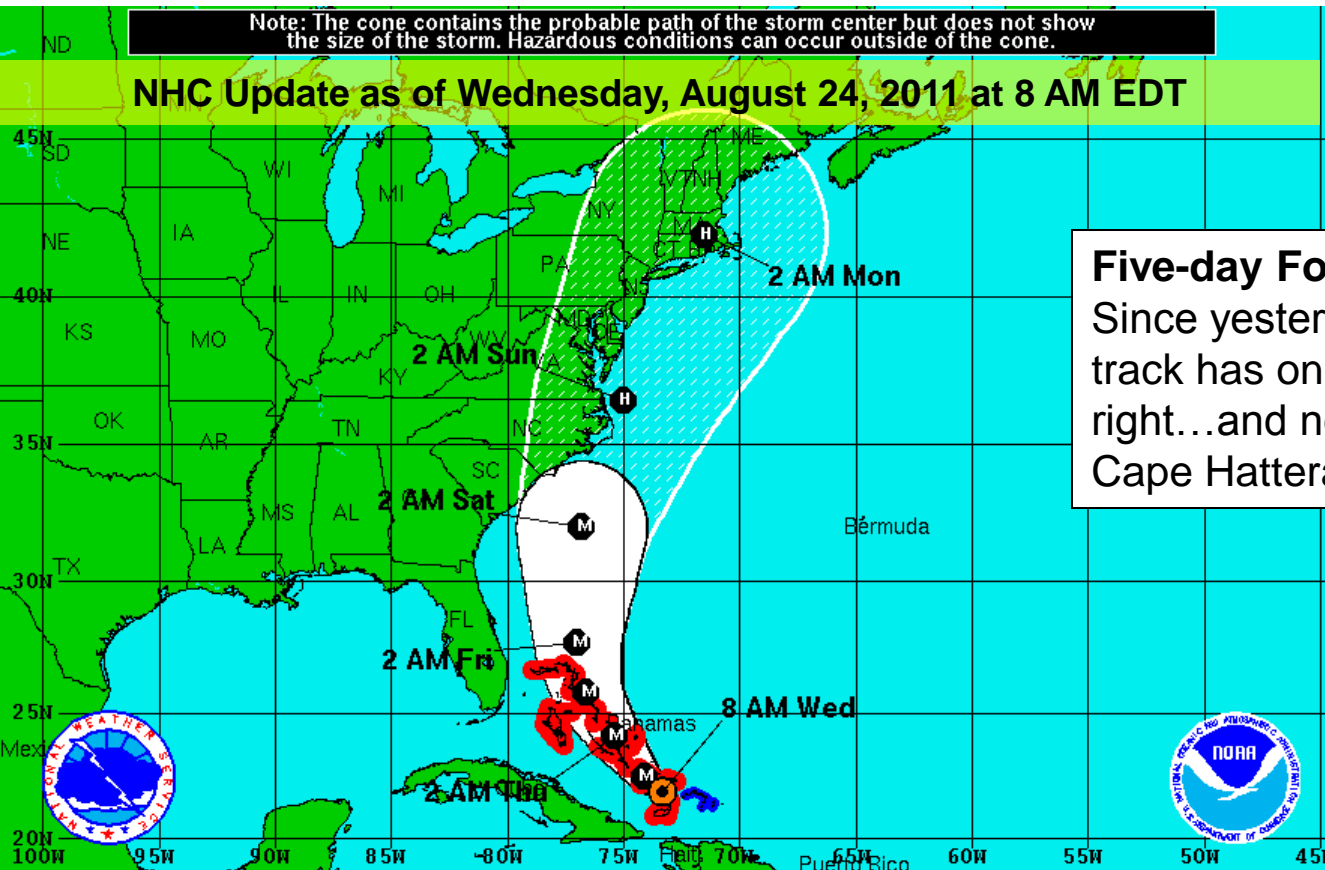
Hurricane Irene now a category 3 hurricane



Wednesday Irene Information

Note: The cone contains the probable path of the storm center but does not show the size of the storm. Hazardous conditions can occur outside of the cone.

NHC Update as of Wednesday, August 24, 2011 at 8 AM EDT



Five-day Forecast Track:
 Since yesterday...the official forecast track has once again been shifted to the right...and now takes the center over Cape Hatteras.

<p>Hurricane Irene Wednesday August 24, 2011 8 AM EDT Intermediate Advisory 16A NWS National Hurricane Center</p>	<p>Current Information: Center Location 21.9 N 73.3 W Max Sustained Wind 115 mph Movement WNW at 9 mph</p>	<p>Forecast Positions: ● Tropical Cyclone ○ Post-Tropical Sustained Winds: D < 39 mph S 39-73 mph H 74-110 mph M > 110mph</p>
<p>Potential Track Area: Day 1-3 Day 4-5</p>	<p>Watches: Hurricane Trop.Storm</p>	<p>Warnings: Hurricane Trop.Storm</p>

Wednesday Irene Information

Model Runs from the 2 AM, Wed 8/24/2011 cycle



Wednesday Irene Information – Morning Update

Possible NC impacts starting late Friday and lasting through Sunday:

- Dangerous rip currents along the beaches a certainty
- Heaviest rain now looks to be confined to near the coast...with lighter amounts west of Hwy 17, and even lesser amounts west of I-95. As always, localized poor drainage flooding expected with any heavy rain.
- Tropical and hurricane force winds mainly near the coast
- Coastal storm surge possible...once again dependent on exact track.
- Brief tornadoes...mainly to the north and east of the track

Confidence Factor:

- Models are converging on a solution that keeps the center of Irene off the NC coast...or perhaps a brief Cape Hatteras landfall.

Other thoughts and concerns:

- If track doesn't change much, the first of the impacts may be felt as early as Friday with effects through Saturday
- Those planning to travel to the coast this weekend should pay close attention since the greatest impacts are expected along the coast, and particularly the Outer Banks.
- Based on eastward shift of the track, drought relief for the state, particularly the southeast part of the state, may be limited.

References

National Weather Service Raleigh, NC
Nick Petro
Warning Coordination Meteorologist
Nicholas.Petro@noaa.gov
(919) 515-8210 ext. 223

For the latest information please see the following websites:

National Hurricane Center: <http://www.nhc.noaa.gov/>

NWS Webpages:

NWS Raleigh: <http://www.erh.noaa.gov/rah/>

NWS Wakefield: <http://www.erh.noaa.gov/akq/>

NWS Morehead City: <http://www.erh.noaa.gov/mhx/>

NWS Wilmington: <http://www.erh.noaa.gov/ilm/>

This briefing will be updated Wednesday morning. In the meantime, reference the links above.