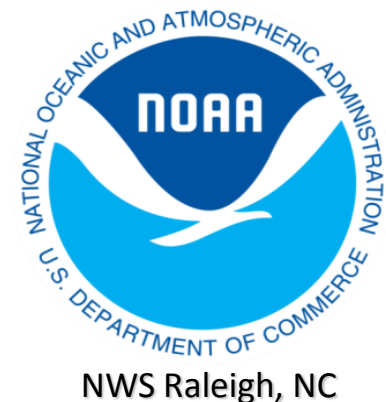
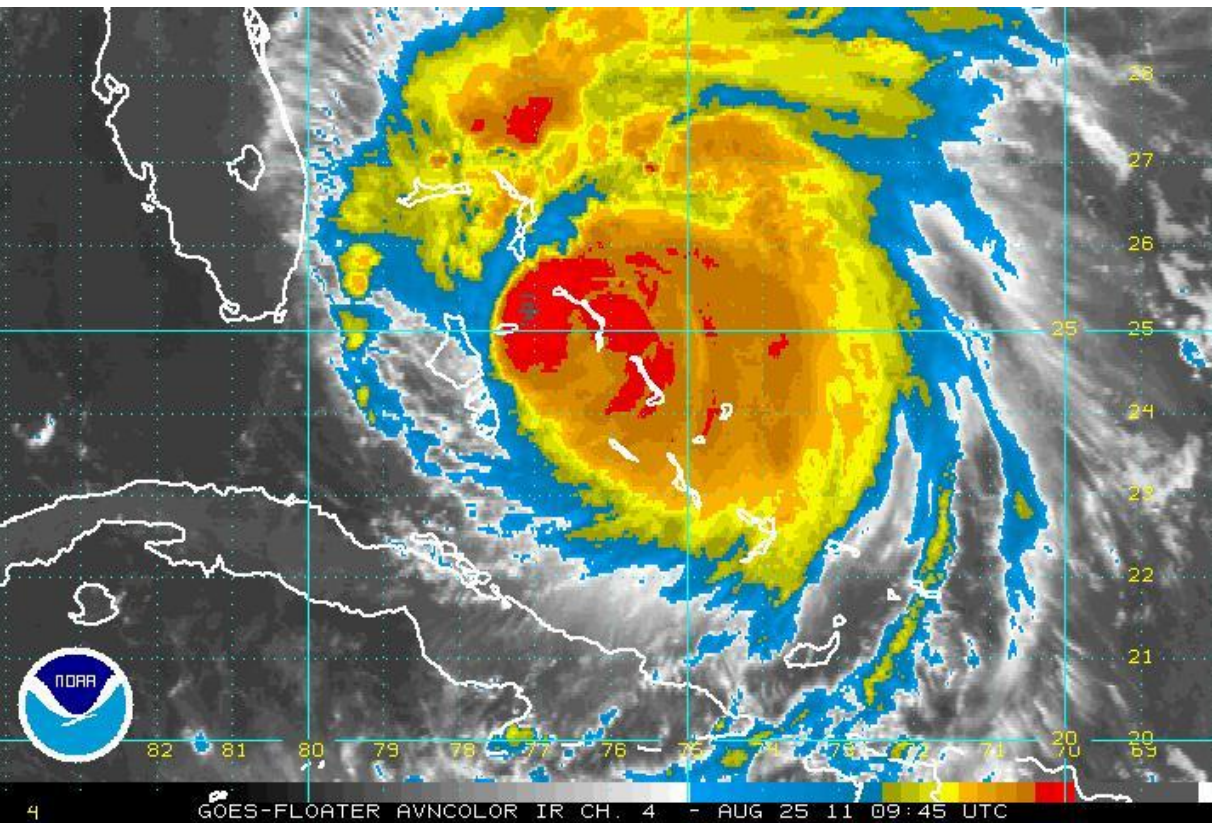


# Hurricane Irene Briefing

Prepared 7 AM, Thursday August 25, 2011

**...Dangerous hurricane Irene moving over the northwestern Bahamas...**

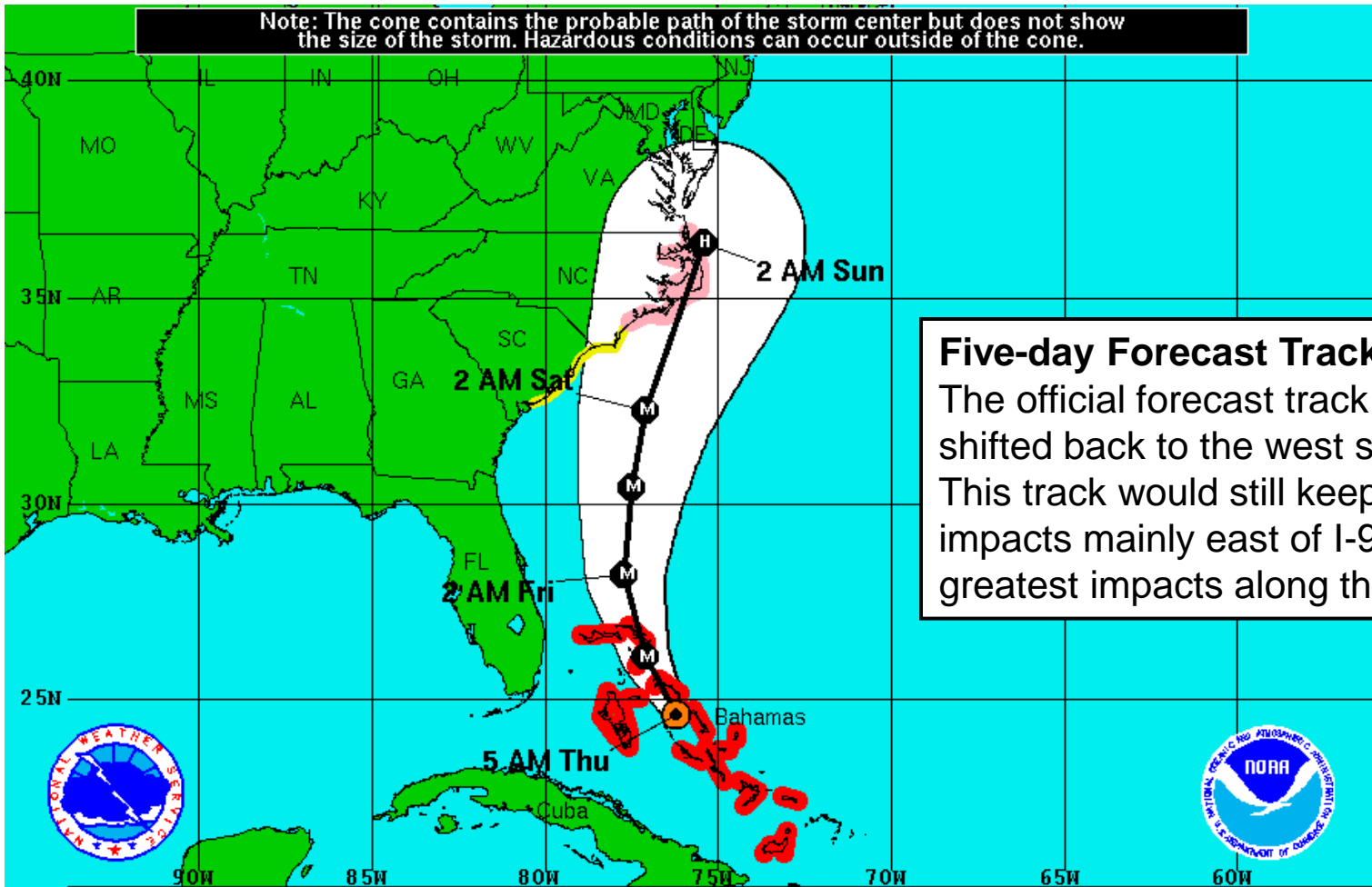
A hurricane watch is in effect for north of Surf City North Carolina to the North Carolina-Virginia border including the Pamlico...Albemarle...and Currituck sounds. A tropical storm watch is in effect for north of Edisto beach South Carolina to Surf City North Carolina.



# Wednesday Irene Information

NHC Update as of Wednesday, August 24, 2011 at 2 PM EDT

Note: The cone contains the probable path of the storm center but does not show the size of the storm. Hazardous conditions can occur outside of the cone.



**Five-day Forecast Track:**  
 The official forecast track has Irene has shifted back to the west since yesterday. This track would still keep the highest impacts mainly east of I-95...with the greatest impacts along the Outer Banks.

<p><b>Hurricane Irene</b>                  Thursday August 25, 2011                  5 AM EDT Advisory 20                  NWS National Hurricane Center</p>	<p><b>Current Information:</b> ●                  Center Location 24.6 N 76.2 W                  Max Sustained Wind 115 mph                  Movement NW at 12 mph</p>	<p><b>Forecast Positions:</b>                  ● Tropical Cyclone ○ Post-Tropical                  Sustained Winds: D &lt; 39 mph                  S 39-73 mph H 74-110 mph M &gt; 110mph</p>
<p><b>Potential Track Area:</b>   Day 1-3</p>	<p><b>Watches:</b>   Hurricane  Trop.Storm</p>	<p><b>Warnings:</b>   Hurricane  Trop.Storm</p>

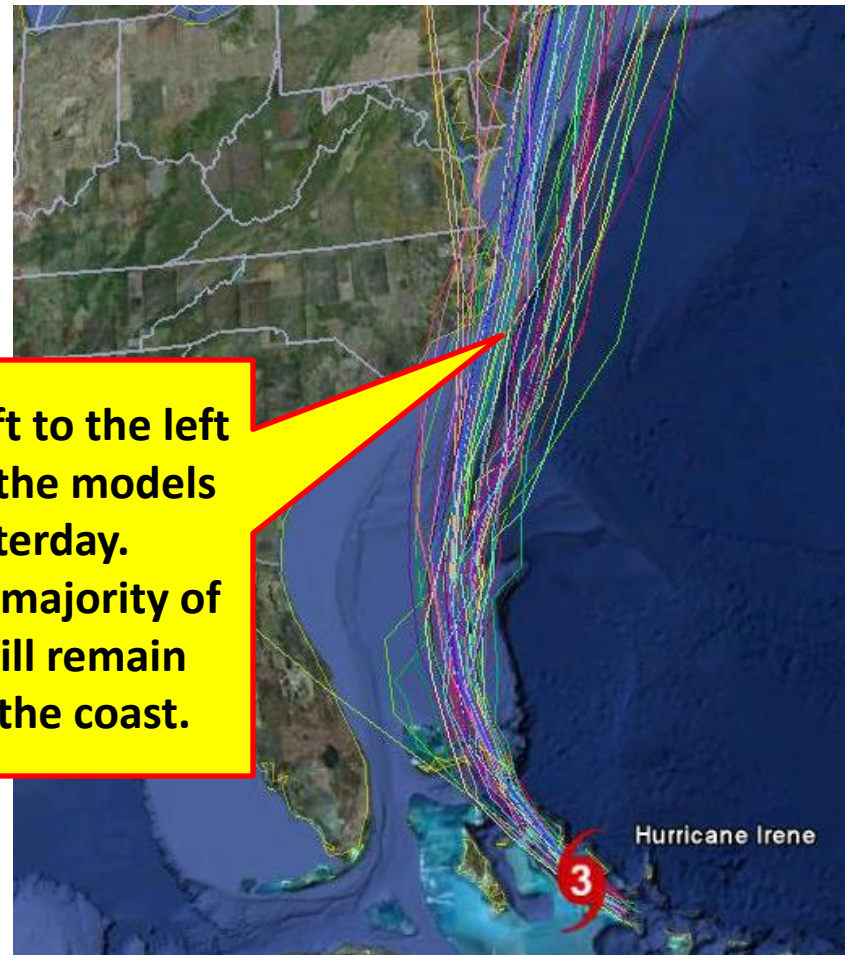
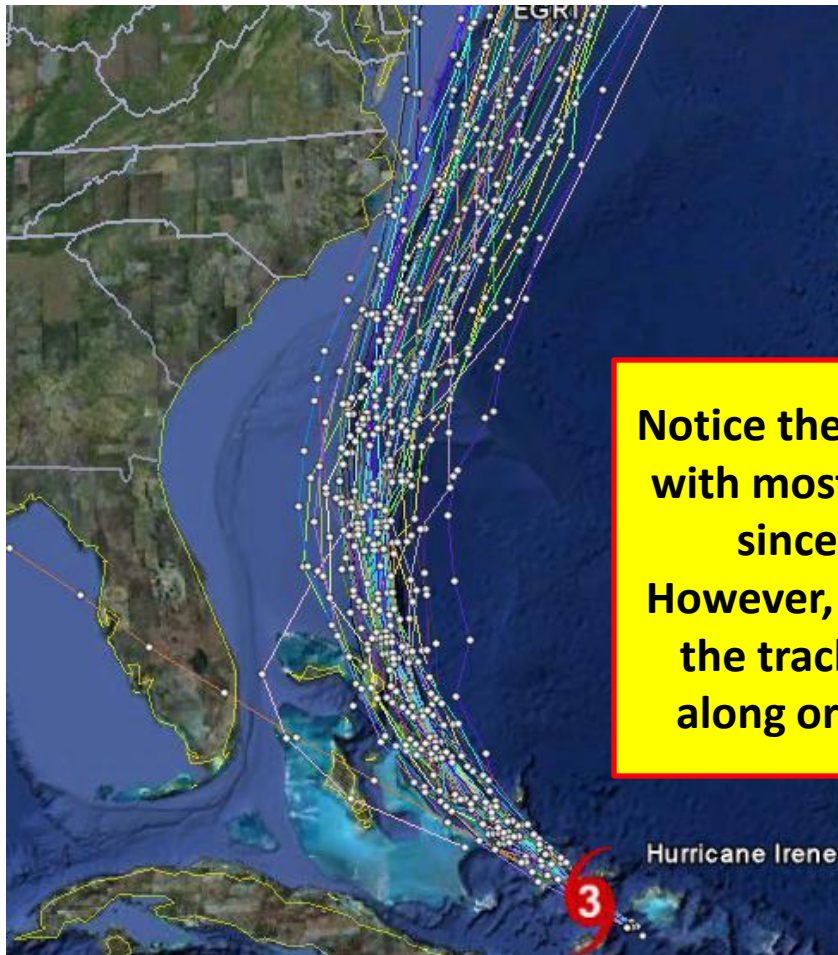


# Wednesday Irene Information

## Model Runs

Yesterday's mid-day Model Runs

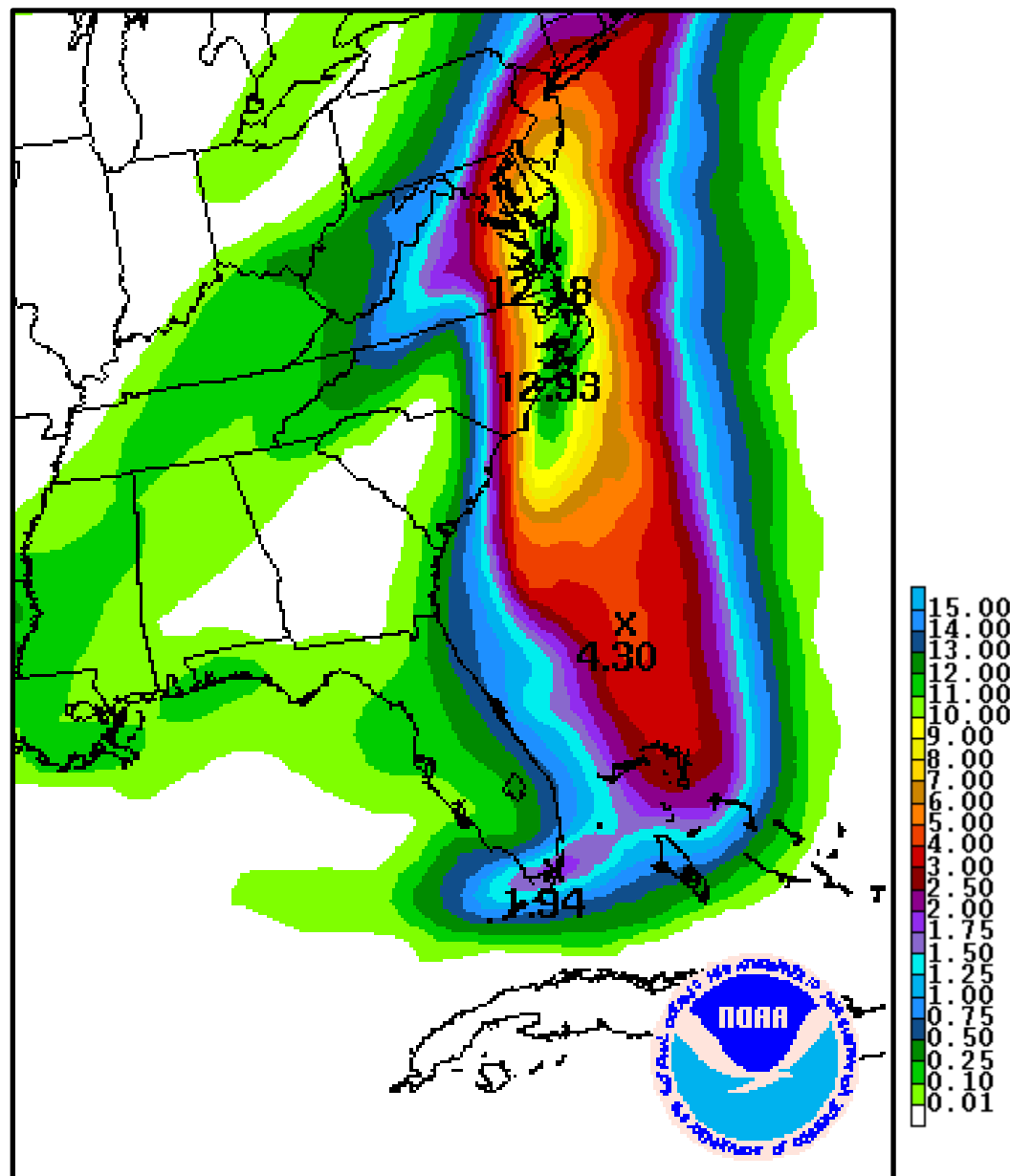
Today's Model Runs from the 2AM  
EDT 8/25/2011 Cycle



**Notice the shift to the left  
with most of the models  
since yesterday.  
However, the majority of  
the tracks still remain  
along or off the coast.**

These tracks should not be used for decision making. These model tracks are shown only to demonstrate the uncertainty associated with the forecast. In addition, these tracks only show the center of the storm. Significant effects can be felt well away from the storm.

# Rainfall Potential

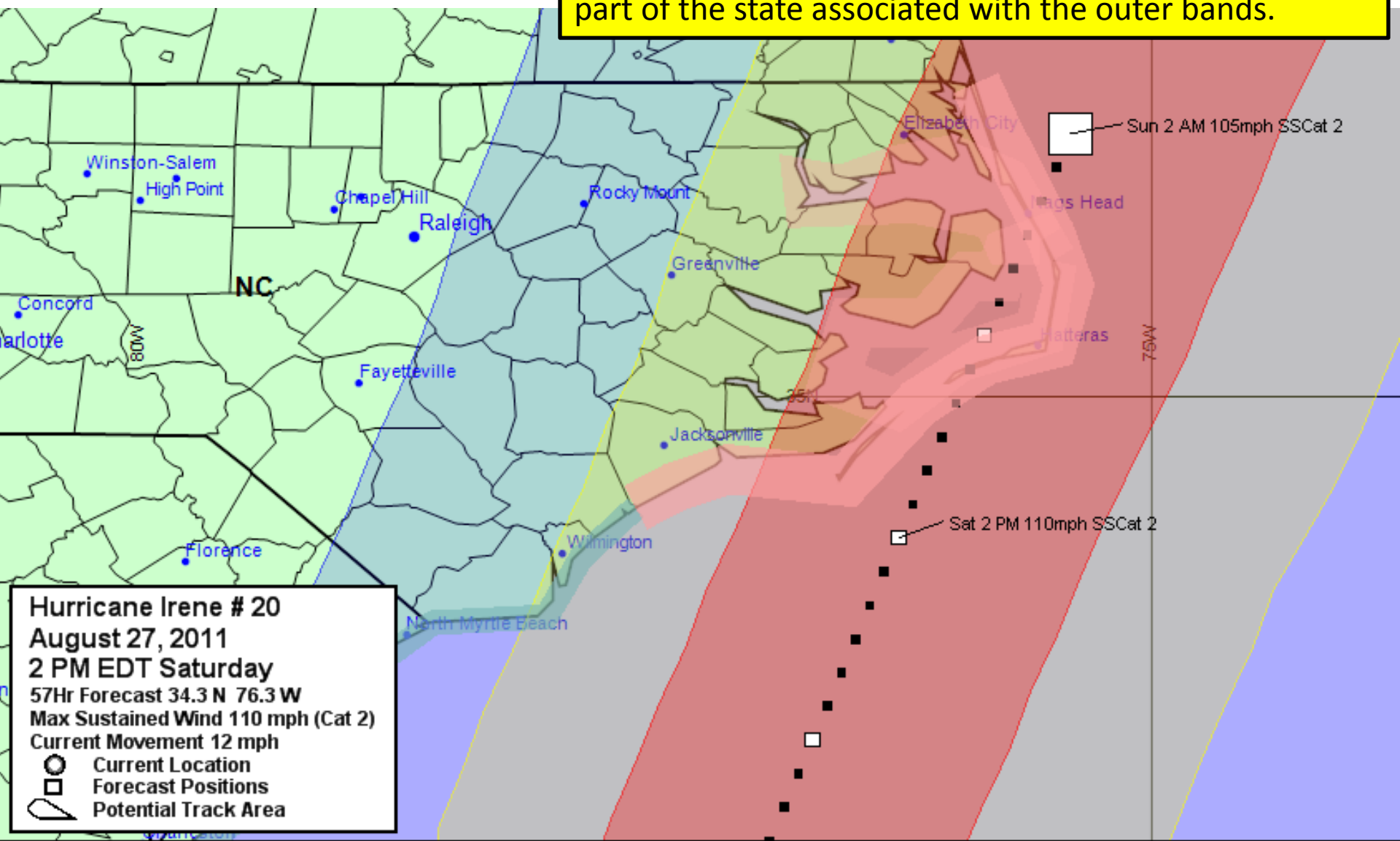


Rainfall amounts will be greatest east of I-95 and particularly near the coast where greater than 6 inches of rainfall is possible. The chance for heavy rain will rapidly diminish to the west...with most of central NC only expecting to see an inch or two of rainfall. Depending on where the outer bands set up, localized heavier rainfall amounts greater than 2 inches may be seen across the central portion of the state.

DAY 1-3 OPF  
VALID 12Z THU AUG 25 2011  
THRU 12Z SUN AUG 28 2011  
ISSUED: 0947Z THU AUG 25 2011  
FORECASTER: HPC  
NOAA/NWS/NCEP/HPC

# Wind Potential

Potential for worst wind confined mainly east of I-95, and particularly the Outer Banks. Can't rule out a couple brief gusts up around 40 mph across the central part of the state associated with the outer bands.



**Hurricane Irene # 20**  
**August 27, 2011**  
**2 PM EDT Saturday**  
57Hr Forecast 34.3 N 76.3 W  
Max Sustained Wind 110 mph (Cat 2)  
Current Movement 12 mph  
○ Current Location  
□ Forecast Positions  
Potential Track Area

Wind >=64knots(75mph)

Wind >= 50kts (58mph)

Wind >=34kts (39mph)

# Thursday Irene Information Summary

## Morning Update

- Tropical Storm and Hurricane watches have been issued for the Carolinas...see the following link for details:  
<http://www.nhc.noaa.gov/text/refresh/MIATCPAT4+shtml/250852.shtml?>
- A slight shift to the left in the official forecast track has been noted, but worst impacts still expected to remain east of I-95.
- Impacts for the central portion of the state on Saturday will include:
  - Occasional heavy rain as the outer bands pass across the area. Rainfall amounts of 1-2 inches expect...with localized heavier amounts. Greatest rainfall amounts east of I-95 where greater than 6 inches is possible.
  - Strongest winds should also remain east of I-95. However...isolated gusts up to 40 mph can't be ruled out with the passage of the outer bands
  - Greatest risk of flooding will remain across the eastern portion of the state. Localized poor drainage ponding or flooding possible across the central portion of the state with the heavier showers.
- Major marine and coastal impacts expected, including storm surge and coastal flooding, high winds, dangerous surf, and rip currents. For additional details regarding the immediate coastal impacts, please see the briefings from NWS Newport and NWS Wilmington at:
  - NWS Newport briefing: <http://www.erh.noaa.gov/mhx/downloads/briefings/>
  - NWS Wilmington briefing: <http://www.erh.noaa.gov/ilm/downloads/briefings/>
- Confidence Factor: With the slight shift back to the left...it should be noted that central NC residents should not let their guard down...and additional track adjustments...and thus impact adjustments...are still possible...so stay tuned!

# References

**National Weather Service Raleigh, NC**  
**Nick Petro - Warning Coordination Meteorologist**  
**Nicholas.Petro@noaa.gov**  
**(919) 515-8210 ext. 223**

**For the latest information please see the following websites:**

- National Hurricane Center: <http://www.nhc.noaa.gov/>
- NWS Raleigh: <http://www.erh.noaa.gov/rah/>
- NWS Wakefield: <http://www.erh.noaa.gov/akq/>
- NWS Morehead City: <http://www.erh.noaa.gov/mhx/>
- NWS Wilmington: <http://www.erh.noaa.gov/ilm/>

This briefing will be updated Thursday afternoon. In the meantime, reference the links above.